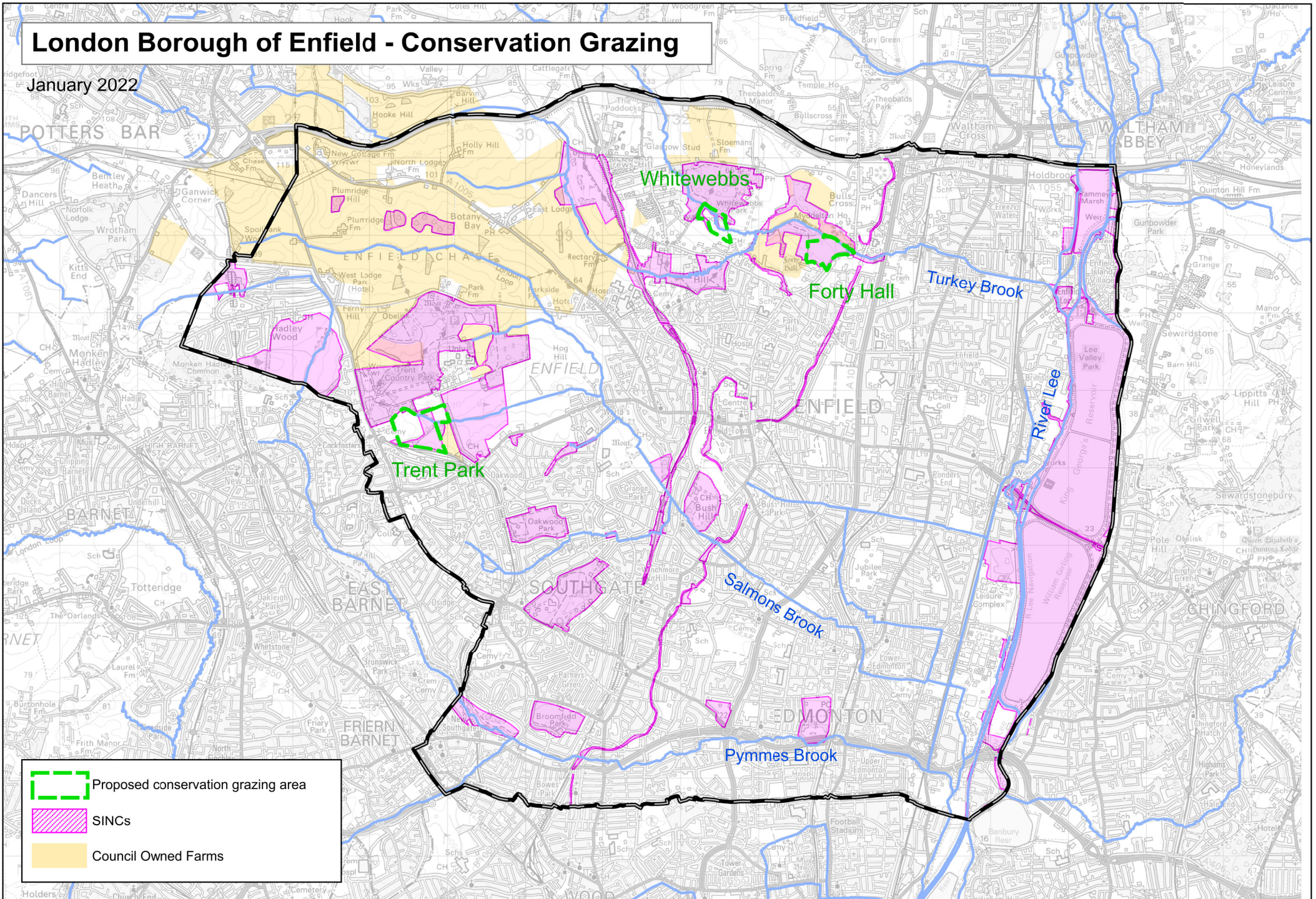

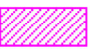



London Borough of Enfield - Conservation Grazing

January 2022



-  Proposed conservation grazing area
-  SINCS
-  Council Owned Farms




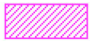
Forty Hall - Conservation Grazing

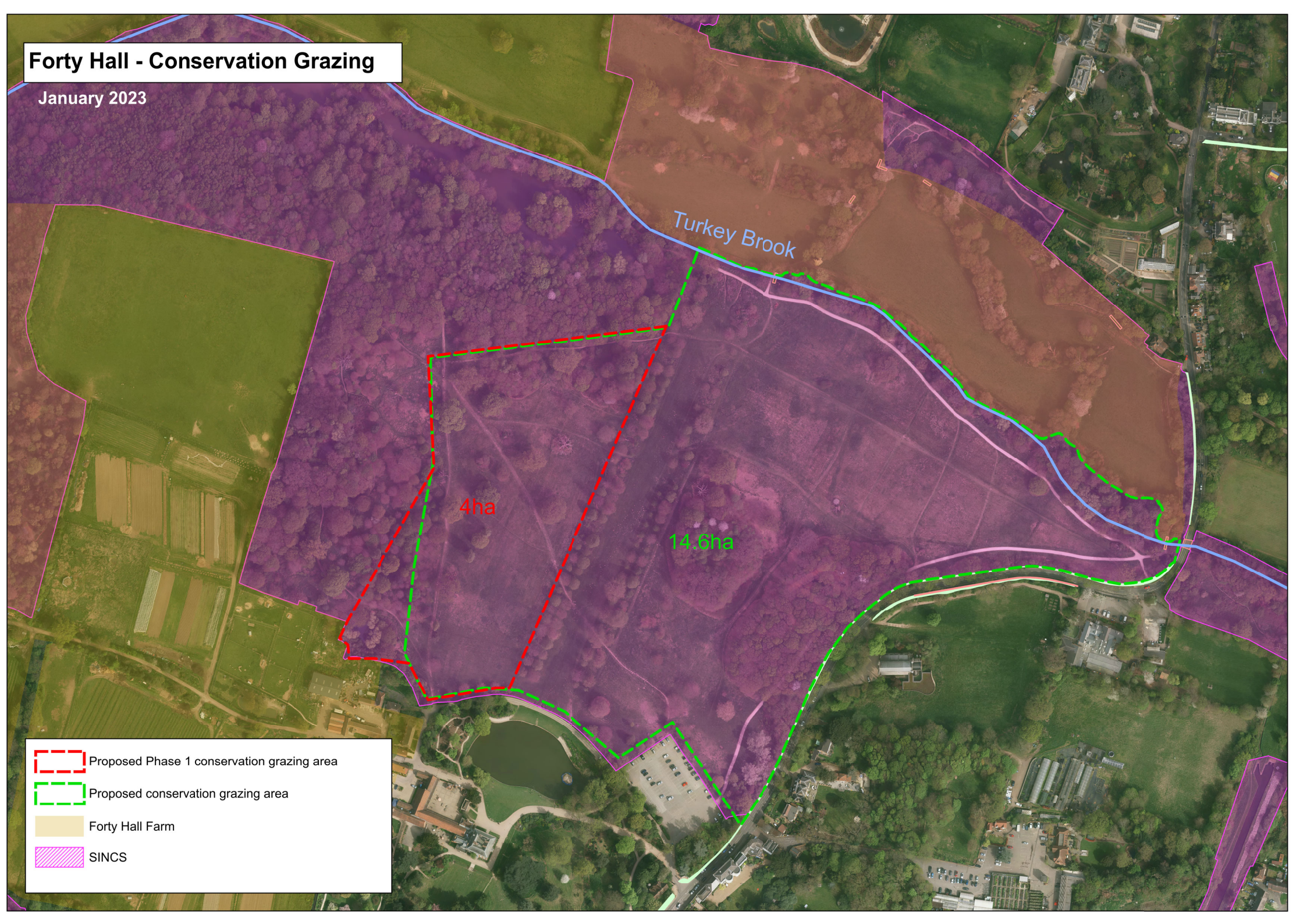
January 2023

Turkey Brook

4ha

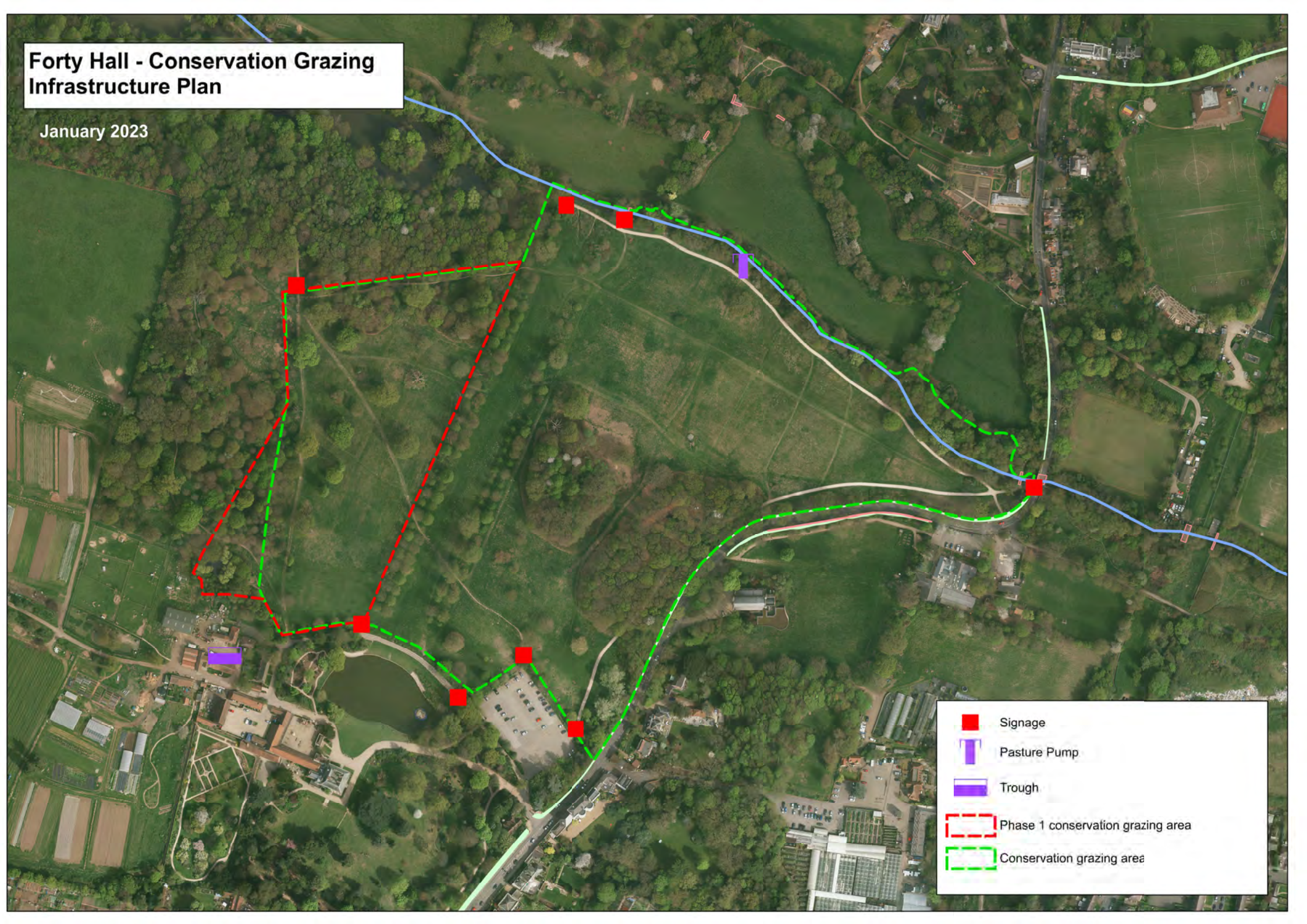
14.6ha


-  Proposed Phase 1 conservation grazing area
-  Proposed conservation grazing area
-  Forty Hall Farm
-  SINCS



Forty Hall - Conservation Grazing Infrastructure Plan

January 2023



-  Signage
-  Pasture Pump
-  Trough
-  Phase 1 conservation grazing area
-  Conservation grazing area

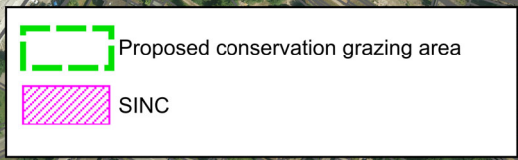
Trent Park - Conservation Grazing

January 2022

28.4 ha

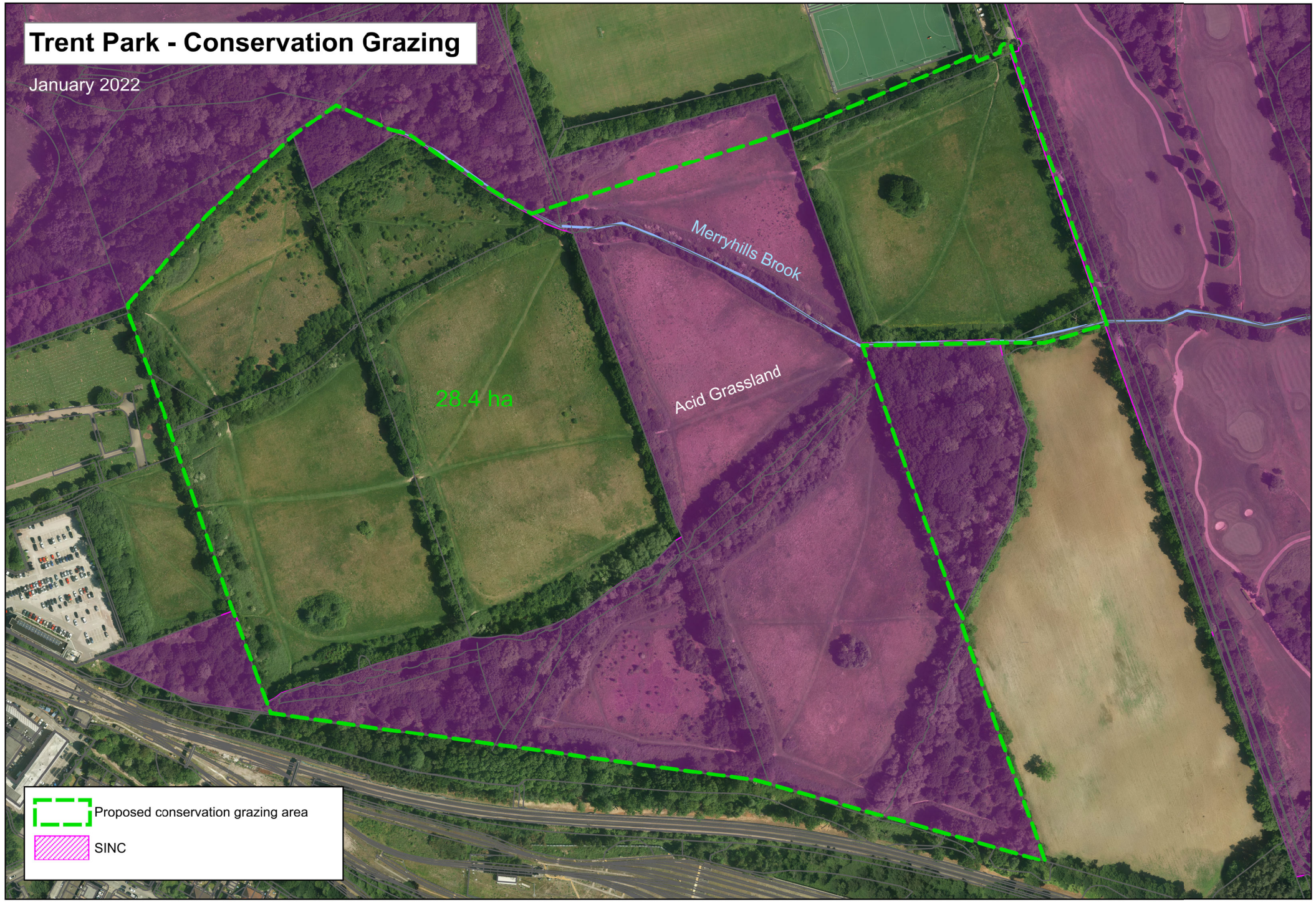
Merryhills Brook

Acid Grassland



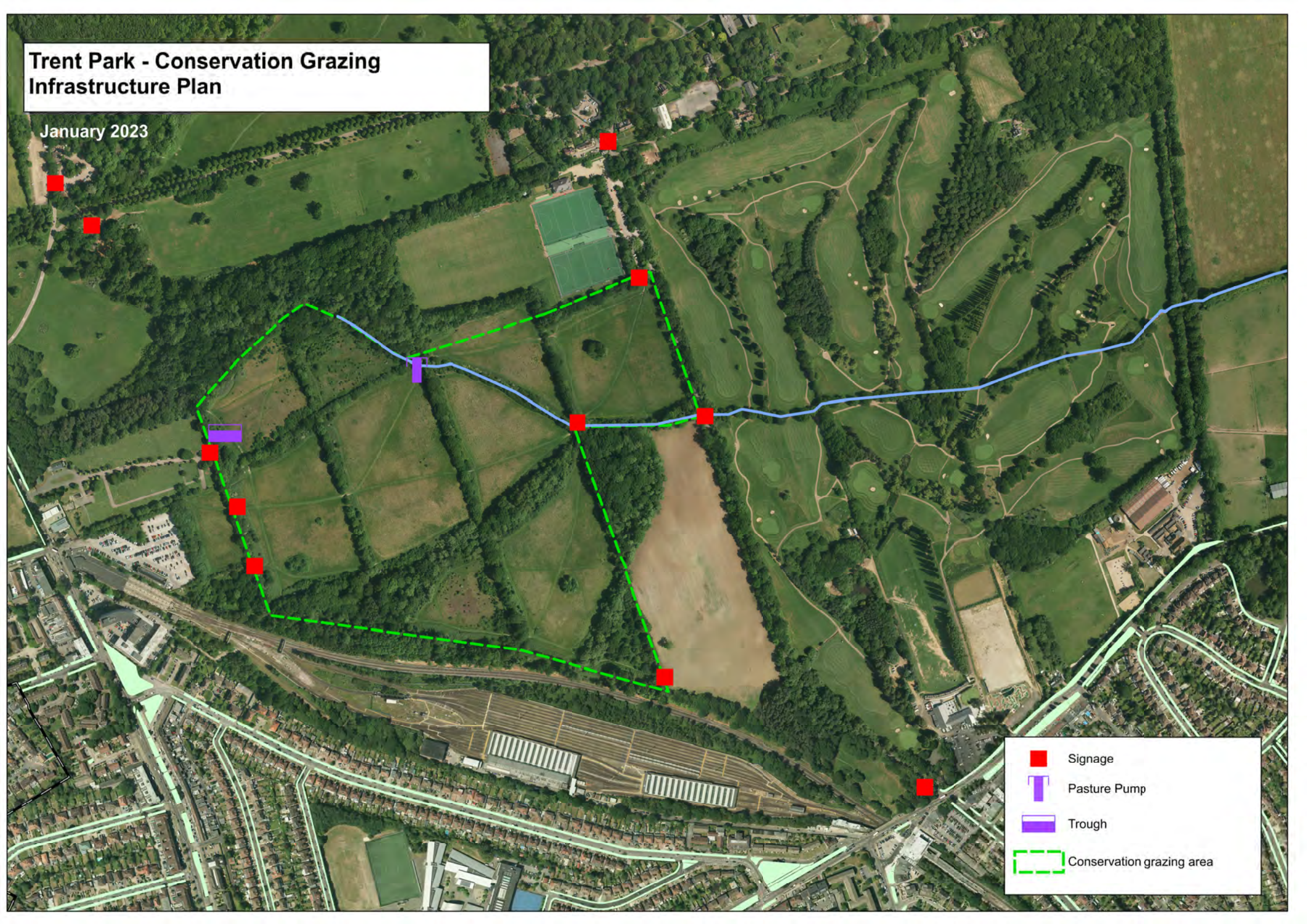
Proposed conservation grazing area





SINC



Trent Park - Conservation Grazing Infrastructure Plan

January 2023



-  Signage
-  Pasture Pump
-  Trough
-  Conservation grazing area

Whitewebbs - Conservation Grazing

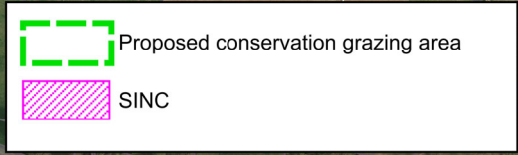
January 2022

Whitewebbs Wood

9.2 ha

Cuffley Brook

Turkey Brook



Proposed conservation grazing area

SINC



Whitewebbs Park - Conservation Grazing Infrastructure Plan

January 2023

- Signage
- ⊥ Pasture Pump
- ▭ Trough
- ▭ Conservation grazing area